

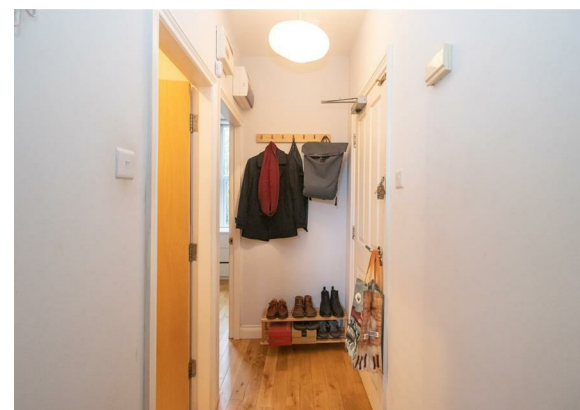
Flat 4 10 Alness Road, Whalley Range, Manchester, M16 8ET



JP&Brimelow
ESTATE AGENTS

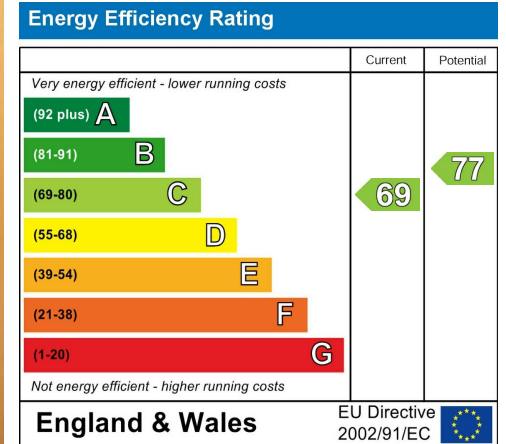
Offers In The Region Of £140,000

****VIDEO TOUR AVAILABLE**** A well-presented, ONE DOUBLE BEDROOMED, first floor apartment within this attractive period conversion situated in this quiet and leafy location off Brantingham Road here in Whalley Range. A stone's throw from Alexandra Park, a ten-minute walk to nearby independent bars/restaurants including 'The Hilary Step' bar on Upper Chorlton Road, Tesco Metro is a few minutes stroll away on Withington Road and fantastic transport links on Alexandra Road South giving you direct access into the City Centre. The apartment comprises; communal entrance hallway, a private entrance hall, open plan lounge/dining room, a fitted kitchen, double bedroom and a modern three-piece white suite bathroom. The apartment benefits from double glazing throughout, gas fired central heating, well-maintained landscaped communal lawned garden to the rear aspect with secure allocated off road parking to the rear aspect. Would ideally suit a first time-buyer or professional couple and early viewing is highly recommended.





EPC Chart



Tenure: **Leasehold** Council Tax Band: **A**

First Floor



Chorlton & Didsbury Ltd
 430 Barlow Moor Road, Chorlton, Manchester, M21 8AD
 Chorlton: 0161 882 2233 Didsbury: 0161 448 0622
 E: chorlton@jpbrimelow.co.uk www.jpbrimelow.co.uk



JP & Brimelow
 ESTATE AGENTS

NOTICE: J P & Brimelow Chorlton & Didsbury Ltd for themselves and for the vendors or lessors of this property whose agents they are give notice that:

- (i) the particulars are set out as a general outline only for the guidance of intending purchasers or lessees, and do not constitute, nor constitute part of, an offer or contract;
- (ii) all descriptions, dimensions, references to the condition and necessary permissions for use and occupation, and other details are given in good faith and are believed to be correct but any intending purchasers or tenants should not rely on them as statements or representations of fact but must satisfy themselves by inspection or otherwise as to the correctness of each of them;
- (iii) no person in the employment of JP & Brimelow Ltd has any authority to make or give any representation or warranty whatever in relation to this property.



Follow us on Twitter @jpandbrimelows